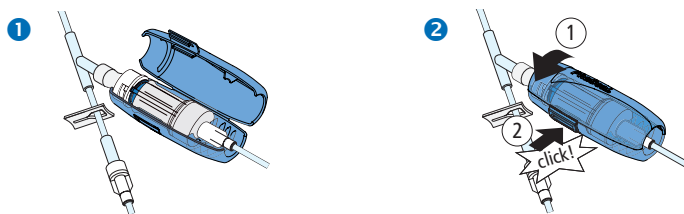


Infusion Clamp | REF M25

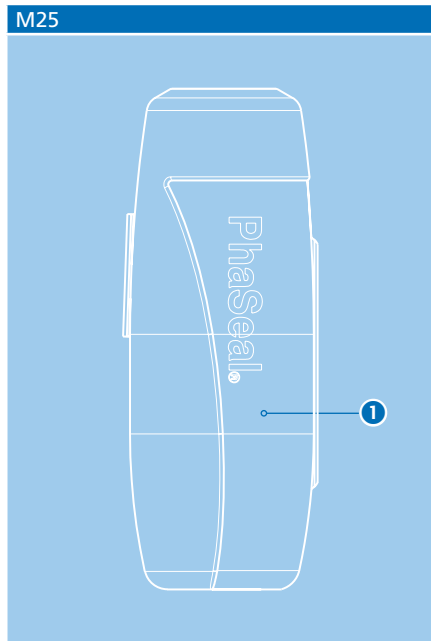


Infusion Clamp

To provide a secure and safe connection during the nursing procedure of infusing hazardous drugs; while utilizing the PhaSeal system. The PhaSeal Infusion Clamp secures the connection of the PhaSeal Injector Luer Lock and the PhaSeal Connector at the hub of the IV line.



ASSEMBLY DRAWING



BILL OF MATERIALS

Pos.	Components	Material	Characteristics	Qty
1	Clamp	Polypropylene (PP cop)	Blue	1

PHYSICAL CHARACTERISTICS

REF / Art. no.	Dimension length	Dimension width	Packaging: User box	Packaging: Transport box
M25	65.4 mm	22.5 mm	25 pcs	100 pcs

Carmel Pharma AB Aminogatan 30 SE-431 53 Mölndal Sweden
 Tel: +46 31 703 04 00 Fax: +46 31 703 04 04 E-mail: info@carmelpharma.com Web: www.carmelpharma.com